

# Tiny EGT Controller

Software,drivers and latest info can be downloaded at

[www.Kperformance.be](http://www.Kperformance.be)

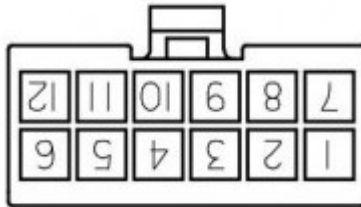
## Package Contents

Tiny EGT should include the following Items:

- 1x circuit board with soldered surface mount components
- 1x MicroMolex connector
- 12x MicroMolex receptacles
- 1x 3D printed case

## Electrical connections

C1		Function
1	CANH	CanBus HIGH
2	Tc2	Tc2 Analog OUT OR Spare Analog 2 IN
3	Tc4	Tc4 Analog OUT OR Spare Analog 4 IN
4	Tc6	Tc6 Analog OUT OR Spare Analog 6 IN
5	5V	+5V Supply OUT
6	GND	Ground
7	CANL	CanBus LOW
8	Tc1	Tc1 Analog OUT OR Spare Analog 1 IN
9	Tc3	Tc3 Analog OUT OR Spare Analog 3 IN
10	Tc5	Tc5 Analog OUT OR Spare Analog 5 IN
11	12v	Input Power
12	GND	Ground



Molex-Notch facing Tc connections

## Operational led Status

LED	Status	Function
1	Power	Controller Started
	Off	Unit No Power
2	Blinking/On	Canbus Activity/Connection OK
	Off	CAN-connection or settings NOK

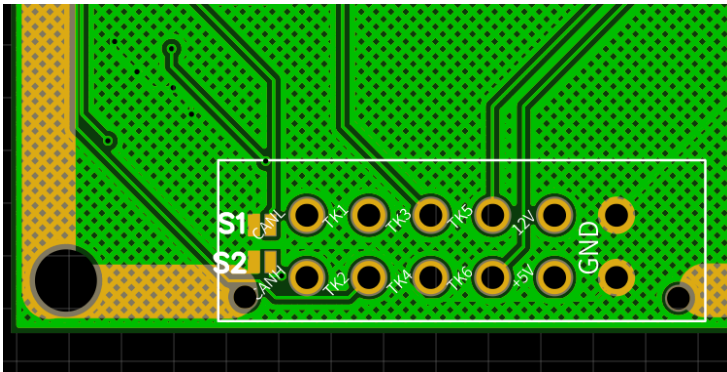


## CAN-bus Setup

### Custom CAN-ID addressing(Optional)

Usefull for users who already have multiple CAN-devices connected; resulting in duplicate ID conflicts.

**Default ID = 5**



Select custom ID via solder bridges S1&S2 on the bottm

CAN-ID	S1	S2
8	open	closed
7	closed	closed
6	closed	open
<b>5(default)</b>	<b><u>open</u></b>	<b><u>open</u></b>

## The Tiny EGT CanBus data:

Item	Function	Detail
CAN Speed	500 Kbit	Default Speed
CAN ID	5/6/7/8	CAN-Bus ID

## Tunerstudio Setup

### EGT OR (Spare ADC) CAN-Inputs:

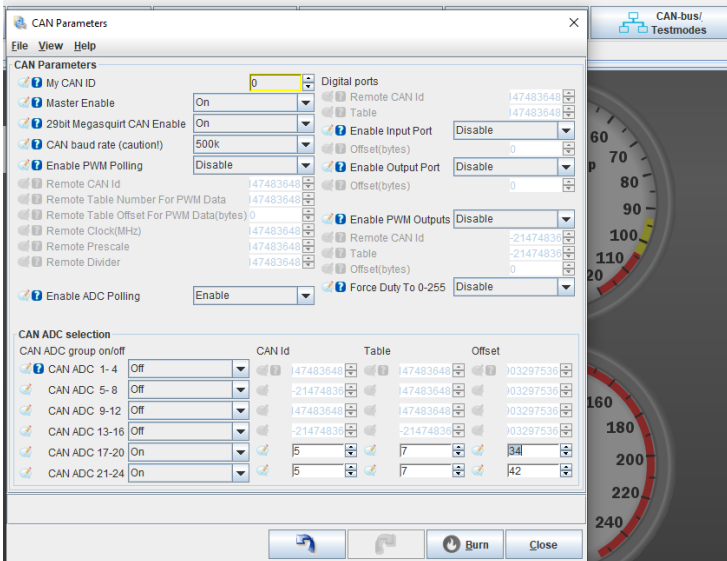
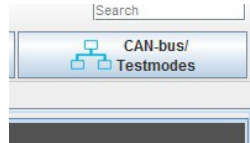
CAN ADC 17-20 are used for EGT 1-4:

Your selected CanBus ID, Table 7 with offset 34

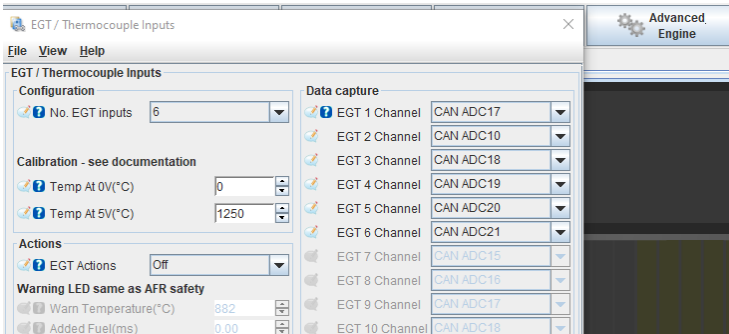
CAN ADC 21-22 are used for EGT 5-6:

CAN ADC 23-24 are used for monitoring PowerInput and version.

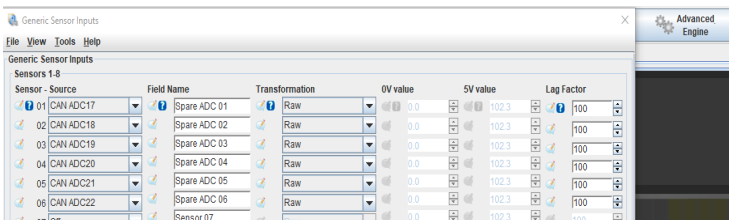
Your selected CanBus ID, Table 7 with offset 42



## 6x CAN EGT Inputs:



## Unused EGT Inputs as spare CAN Analog Inputs:



**!WARNING!**

Do NOT connect more than 5V on input pins

CAN ADC 23-24 can NOT be re-used